

BUSINESS INDICATORS

**AUSTRALIAN
CAPITAL
TERRITORY**

EMBARGO: 11:30AM (CANBERRA TIME) WED 23 JUNE 1999

C O N T E N T S

| | <i>page</i> |
|------------------------------------|-------------|
| Notes | 2 |
| Summary of findings | 3 |
| Selected business indicators | 5 |

FEATURE ARTICLE

| | |
|---|---|
| Participation in Education in the ACT | 6 |
|---|---|

TABLES

| | |
|--|----|
| 1 Business expectations: Sales, June quarter 1999/ March quarter 2000, expected aggregate change | 9 |
| 2 Business indicators, June 1999 | 10 |
| 3 ACT in relation to the rest of Australia | 13 |
| 4 ACT in relation to the rest of Australia—percentage change | 14 |

- For more information about these and related unpublished statistics, contact Will Blythe on Canberra 02 6205 0032 or Marianita Jose on Canberra 02 6207 0277, or any ABS office shown on the back cover of this publication.

NOTES

FORTHCOMING ISSUES

| <i>ISSUE</i> | <i>RELEASE DATE</i> |
|----------------|---------------------|
| July 1999 | 20 July 1999 |
| August 1999 | 23 August 1999 |
| September 1999 | 20 September 1999 |
| October 1999 | 18 October 1999 |
| November 1999 | 23 November 1999 |
| December 1999 | 21 December 1999 |

SYMBOLS AND OTHER USAGES

| | |
|------|---|
| ACT | Australian Capital Territory |
| n.a. | not available |
| no. | number |
| n.p. | not available for publication |
| p | preliminary |
| * | Represents data with a standard error of greater than 25%. Caution should be exercised when using this data. |
| — | nil or rounded to zero |

Dalma Jacobs
Regional Director, Australian Capital Territory

SUMMARY OF FINDINGS

UPDATED SERIES

Series updated since the May 1999 issue are: population, labour force, industrial disputes, average weekly earnings, retail trade, housing finance, building approvals, house price index, motor vehicle registrations, and state final demand. A new series indicator, wage cost index, is included in this issue. The feature article on pages 6–8 is on Participation in Education in the ACT.

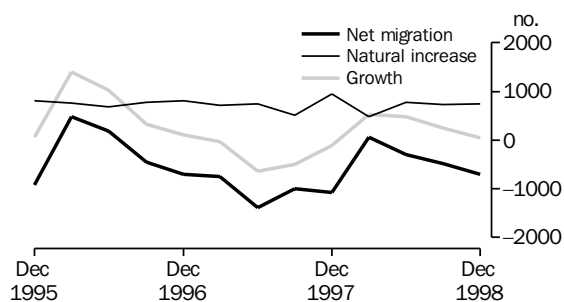
NOTABLE MOVEMENTS

| | |
|-------------------------|--|
| Population | The estimated resident population of the ACT in December quarter 1998 was 308,707, an increase of 48 persons since the September quarter 1998 and an increase of 1,312 persons since the December quarter 1997. The population for the 12 months to December 1998 in the ACT showed an increase of 0.4%, while Australia's population grew by 1.3%. For the December quarter 1998, net migration showed a loss of 704 residents, with both net overseas migration and net interstate migration from the ACT being negative. Net interstate migration has been negative since September quarter 1996. |
| Labour force | In May 1999, the trend unemployment rate for the ACT was 6.2%, an increase of 0.1 percentage points from the previous month, and a decrease of 0.7 percentage points compared to May 1998. Trend employment increased by 0.1% (to 157,500 persons). Nationally, trend employment increased by 0.1% from the previous month and the trend unemployment rate remained steady at 7.4%. The trend participation rate in the ACT increased by 0.1 percentage points to 71.0% compared to the previous month, while nationally the trend participation rate decreased by 0.1 percentage points to 62.9%. |
| Industrial disputes | For the 12 months ended February 1999 there were 33 working days lost per thousand employees in the ACT compared to 73 days nationally. In comparison with the 12 months ended February 1999, there was an increase of 94.1% for the ACT and a decrease of 3.9% nationally in the number of working days lost per thousand employees. |
| Average weekly earnings | Full-time adult ordinary time earnings in the ACT were \$842 in February 1999, an increase of \$4 (0.5%) since February 1998. Comparable national earnings were \$745 in February 1999, up \$25 (3.9%) since February 1998. |
| Retail turnover | The trend estimate for retail turnover in the ACT for April 1999 was \$233.3 million, an increase of 0.9% from the previous month and was up 7.5% compared to 12 months ago. The national trend retail turnover recorded an increase of 0.7% from the previous month and was up 8.3% compared to a year ago. |

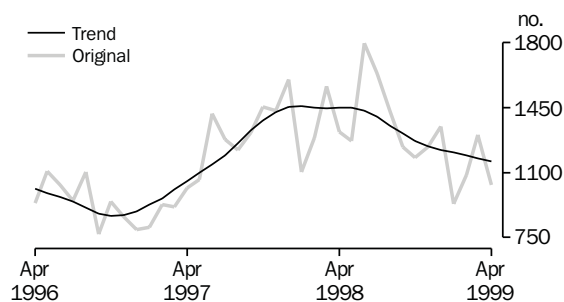
| | |
|----------------------------|--|
| Housing finance | <p>The trend number of dwelling units financed (including refinancing) in the ACT in April 1999 was 796, a decrease of 0.1% from the previous month. The trend estimate for the value of commitments in the ACT was \$105 million, an increase of \$2 million (up 1.9%) from the previous month. Refinancing of existing dwellings comprised 14.4% of the total value of dwelling units financed in April 1999, an increase from 12.0% in the previous month. Nationally, the trend number of dwelling units financed (including refinancing) during April 1999 was 42,588, an increase of 1.6% from the previous month, while the trend estimate for the value of commitments increased to \$5,531 million (up 1.9%) from the previous month.</p> |
| Building approvals | <p>The trend number of dwelling units approved in the ACT decreased by 11.1% to 185 dwelling units in April 1999. Nationally, the trend number of dwelling units approved decreased by 0.3% to 12,976 dwelling units in April 1999.</p> <p>The value of non-residential building approvals in the ACT was \$20.6 million in April 1999, a decrease of \$8.1 million (down 28.2%) from the previous month. There has been an increase of \$14.1 million (up 216.9%) compared to April 1998. Nationally, the value of non-residential building approvals decreased by 24.9% from the previous month and was down 36.0% from April 1998.</p> |
| House price index | <p>The established house price annual index for the ACT during the March quarter 1999 increased by 0.6% from the previous quarter and was up 1.2% compared to March quarter 1998. Nationally, the established house price index increased by 1.8% from the previous quarter and was up 5.7% compared to the March quarter 1998.</p> |
| Motor vehicle registration | <p>The trend estimate for ACT new motor vehicle registrations in April 1999 was 1,159, down 1.4% from the previous month, and was down 20.0% compared to April 1998. Nationally, the trend for total new motor vehicle registrations in April 1999 recorded a 0.1% decrease from the previous month, and was down 1.0% compared to April 1998.</p> |
| State final demand | <p>In the ACT, State final demand (chain volume measure) decreased by 12.7% to \$4,175 million in the March quarter 1999 compared to \$4,781 million in the December quarter 1998. Nationally, domestic final demand (chain volume measure) decreased by 8.6% in the March quarter 1999.</p> |

SELECTED BUSINESS INDICATORS

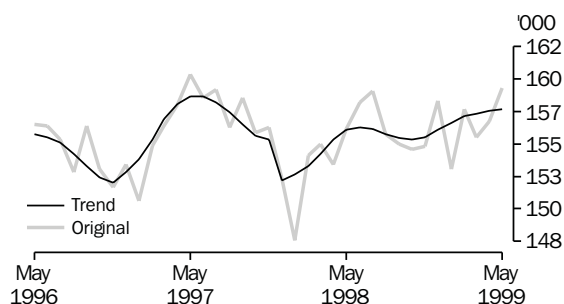
COMPONENTS OF POPULATION GROWTH



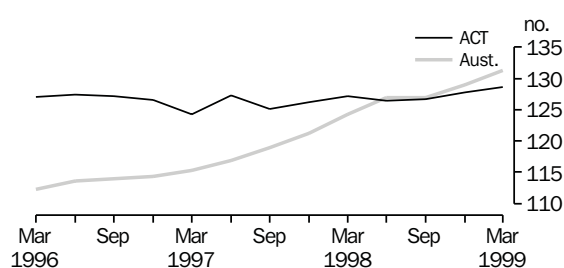
NEW MOTOR VEHICLE REGISTRATIONS



LABOUR FORCE, Employment

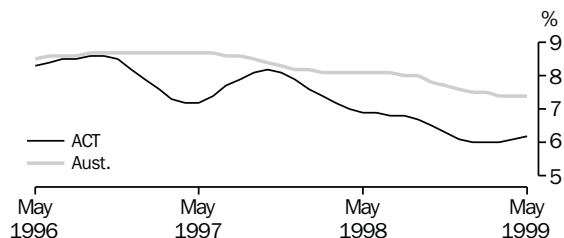


ESTABLISHED HOUSE PRICE ANNUAL INDEX



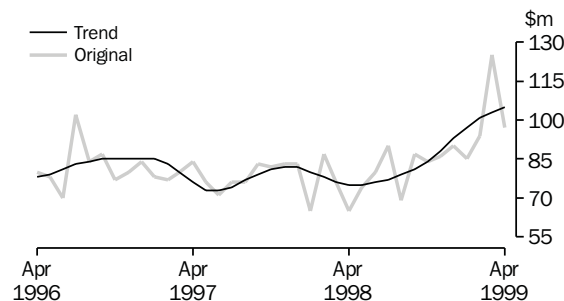
Note: Base of index 1989-90 = 100.0.

LABOUR FORCE, Unemployment Rate: Trend

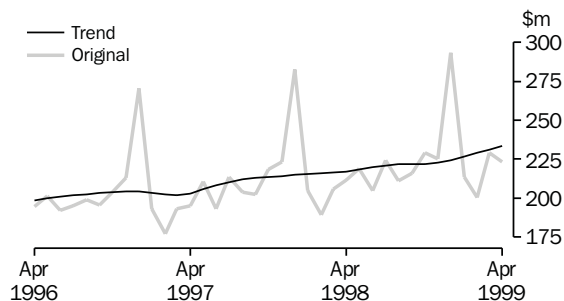


Note: Trend estimates for October 1998 to March 1999 have been revised.

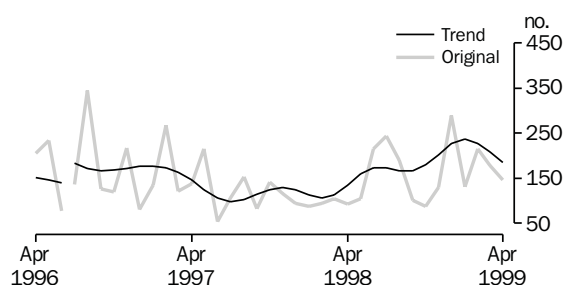
HOUSING FINANCE



RETAIL TURNOVER



BUILDING APPROVAL, Dwelling Units Approved



Note: For the period July to December 1996, 165 dwelling units and total building work of \$40.5 million (16%) had been incorrectly omitted from data reported to ABS. All series for the ACT have been revised from July 1996 and a trend break has been included in the graph.

FEATURE ARTICLE

PARTICIPATION IN EDUCATION IN THE ACT

Overview In September 1998, more than half (58.7% or 28,653) of ACT's 15–24 year old population of 48,806 were participating in education, the highest proportion of any State or Territory and above the national average of 51.4%. In September 1993, 32,200 persons were attending an educational institution, representing 59.0% of the equivalent population. The fall of about 3,500 in the number of people attending an educational institution was due mainly to a decrease of about 2,500 people at tertiary institutions. School students fell by 900 persons.

Some 13,995 (28.7%) persons aged 15–24 were attending school, 10,407 (21.3%) persons were attending higher education institutions, and 3,541 (7.3%) persons were in Technical and Further Education (TAFE). The remaining 711 (1.5%) persons were at business colleges, industry skills centres or other educational institutions.

Labour force participation rates varied from 44.4% for those attending school to 65.3% for those attending higher education and 84.0% for those at TAFE.

Type of school last attended Two-thirds (66.1% or 9,234) of the 13,965 participants in tertiary education seeking a recognised educational qualification had attended government schools. There were 10,407 persons in higher education and of these, 60.6% (6,307) had attended a government school, 25.0% (2,605) a Catholic non-government school and 14.4% (1,495) in other non-government school. Of the 3,006 TAFE students, 82.8% (2,489) had attended a government school, 8.4% (254) a Catholic school and 8.7% (263) an other non-government school.

Country of birth Of the 15–24 year olds born overseas, 70.2% were attending an educational institution in September 1998, compared to 56.4% of persons born in Australia. Nationally, 62.2% of the 15–24 year olds born overseas were attending an educational institution compared to 48.8% of persons born in Australia.

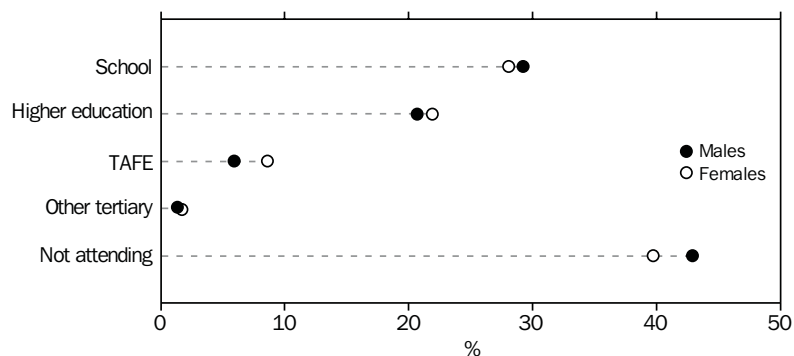
School attendance of 15–19 year olds About 62.8% (13,897) of the 22,120 persons aged 15–19 years in September 1998 were attending school. Of these, 65.9% (9,155) were attending government schools while 34.1% (4,741) were attending non-government schools. Nationally, the school participation rate of persons aged 15–19 years was 53.1%.

Tertiary participation Of the people aged 15–24 years attending an educational institution, the percentage attending tertiary institutions was 51.2% in September 1998 compared to 53.4% in September 1993. Of those attending tertiary education in September 1998, 10,501 (71.6%) were full-time students and 4,157 (28.4%) were part-time tertiary students.

Educational institutions There were 10,407 higher education students aged 15–24 years in September 1998, 1,700 more than in September 1997 and about 200 less than in September 1993. TAFE students numbered 3,541, a decrease of about 1,760 from the 1997 figure and about 2,260 lower than in September 1993.

Some 13,951 males and 14,702 females aged 15–24 were attending an educational institution in September 1998. There were 298 more females than males in higher educational institutions and 649 more females than males at TAFE.

PERSONS AGED 15–24, Participation in Education



Source: *Participation in Education, Australia, September 1998* (Cat. no. 6272.0).

Study for a recognised educational qualification In September 1998, 13,965 persons were studying for a recognised educational qualification at a tertiary institution, 74.5% (10,407) of whom were studying for a bachelor degree or higher qualification. A further 14.2% (1,989) were in vocational courses, 9.5% (1,327) were studying for an undergraduate or associate diploma, and the remaining 1.7% (243) studying for a secondary school course or unknown level.

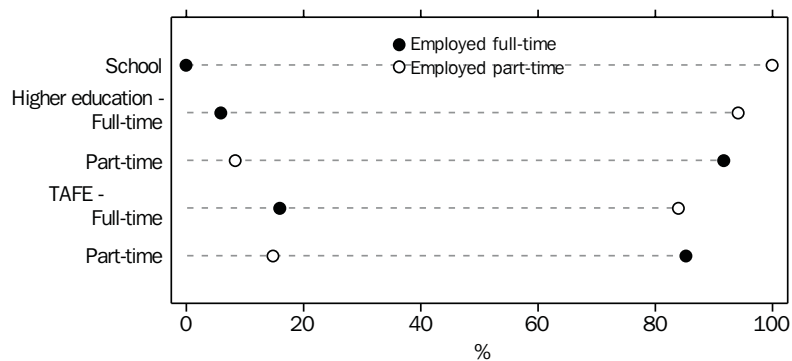
Of the 4,731 former non-government school students studying for a recognised educational qualification, 86.7% were studying for a bachelor degree or higher qualification. The equivalent proportion of former government school students was 68.3%.

Mixing work and education Of the 13,995 school students, 6,219 were in the labour force, giving a participation rate of 44.4%. Of those in the labour force there were 990 persons unemployed while the remaining 5,229 were all employed part-time. The labour force participation rate of the 14,658 tertiary students was 70.1%. For full time tertiary students the participation rate was 60.5% and for part-time tertiary students it was 94.5%. The majority of full-time students were employed part-time (5,059 persons or 93.0%) while most part-time students were employed full-time (3,125 persons or 88.8%).

Mixing work and education
continued

Of the 7,635 female tertiary students who were employed in September 1998, 1,707 (22.4%) were working full-time and studying part-time, and 5,373 (70.4%) were working part-time and studying full-time. Of the 6,554 male tertiary students employed, 1,418 (21.6%) were working full-time and studying part-time and 4,916 (75.0%) were working part-time and studying full-time. The rest of the female and male tertiary students were either working full-time and studying full-time or working part-time and studying part-time.

EMPLOYED PERSONS AGED 15–24 IN EDUCATION, Employment Status



Source: *Participation in Education, Australia, September 1998* (Cat no. 6272.0).

1

BUSINESS EXPECTATIONS: SALES

| | <i>ACT</i> | <i>Aust.</i> |
|---------------------------|------------|--------------|
| <i>Period</i> | % | % |
| Short-term | | |
| Dec qtr 1997–Mar qtr 1998 | –1.1 | –0.3 |
| Mar qtr 1998–Jun qtr 1998 | –0.1 | 1.7 |
| Jun qtr 1998–Sep qtr 1998 | 2.7 | 1.1 |
| Sep qtr 1998–Dec qtr 1998 | 3.5 | 1.5 |
| Dec qtr 1998–Mar qtr 1999 | –2.7 | –0.9 |
| Mar qtr 1999–Jun qtr 1999 | 0.4 | 1.8 |
| Medium-term | | |
| Dec qtr 1997–Dec qtr 1998 | 2.9 | 3.0 |
| Mar qtr 1998–Mar qtr 1999 | 2.6 | 2.6 |
| Jun qtr 1998–Jun qtr 1999 | 6.9 | 2.7 |
| Sep qtr 1998–Sep qtr 1999 | 7.5 | 2.8 |
| Dec qtr 1998–Dec qtr 1999 | 2.6 | 2.7 |
| Mar qtr 1999–Mar qtr 2000 | 1.7 | 2.3 |

| Indicator | Unit | ACT | | | Aust. | | |
|--|------|---------------|-----------------|---------------------------|---------------|-----------------|---------------------------|
| | | Latest figure | % change from | | Latest figure | % change from | |
| | | | Previous period | Same period previous year | | Previous period | Same period previous year |
| POPULATION, VITAL AND LABOUR | | | | | | | |
| POPULATION, Dec qtr 98 | '000 | 308.7 | — | 0.4 | 18 871.8 | 0.3 | 1.3 |
| Natural increase | no. | 752 | 2.3 | -20.9 | 31 389 | 15.2 | -1.5 |
| Net migration | no. | -704 | -44.6 | 54.5 | 27 429 | -21.1 | 158.3 |
| Total increase | no. | 48 | -80.6 | 150.0 | 58 818 | -5.1 | 38.5 |
| LABOUR FORCE, May 99 | | | | | | | |
| Original Series | | | | | | | |
| Employed | '000 | 159.0 | 1.5 | 1.9 | 8 716.5 | — | 1.7 |
| Unemployed | '000 | 10.2 | 4.1 | -8.9 | 688.8 | -2.3 | -6.4 |
| Unemployment rate | % | 6.0 | 0.1 | -0.7 | 7.3 | -0.2 | -0.6 |
| Participation rate | % | 71.5 | 1.1 | — | 62.9 | -0.1 | -0.2 |
| Long-term unemployed, Apr 99 | no. | 3 183 | 9.8 | 15.4 | 209 672 | -5.2 | -11.1 |
| Long-term unemployed as percentage of total unemployed | | 32.4 | 7.5 | 8.3 | 29.7 | -0.3 | -2.3 |
| Trend series | | | | | | | |
| Employed | '000 | 157.5 | 0.1 | 1.0 | 8 718.4 | 0.1 | 1.7 |
| Unemployed | '000 | 10.5 | 1.9 | -9.5 | 697.4 | -0.2 | -7.6 |
| Unemployment rate | % | r6 | 0.1 | -0.7 | r7.4 | — | -0.7 |
| Participation rate | % | 71.0 | 0.1 | -0.6 | 62.9 | -0.1 | -0.3 |
| WAGE AND SALARY EARNERS, Dec qtr 98 | | | | | | | |
| Trend series | | | | | | | |
| Public Sector | '000 | 67.0 | -1.2 | -4.3 | 1 442.3 | -1.0 | -1.8 |
| Private Sector | '000 | 73.8 | 2.5 | 8.7 | 5 654.2 | 1.5 | 5.7 |
| Total | '000 | 140.8 | 0.7 | 2.1 | 7 096.4 | 1.0 | 4.1 |
| JOB VACANCIES, Feb 99 | '000 | 2.3 | 53.3 | 130.0 | 66.6 | -14.0 | -11.8 |
| INDUSTRIAL DISPUTES IN PROGRESS, Feb 99 | | | | | | | |
| Working days lost | '000 | 0.0 | — | -100.0 | 47.6 | 473.5 | 20.8 |
| Days lost per '000 employees (year ended Feb 99) | no. | 33.0 | -5.7 | 94.1 | 73.0 | 1.4 | -3.9 |
| BUILDING AND CONSTRUCTION | | | | | | | |
| HOUSING FINANCE, Apr 99 | | | | | | | |
| Secured commitments to individuals for | | | | | | | |
| Original Series | | | | | | | |
| Construction of dwellings | \$m | 8.0 | -33.3 | 100.0 | 828.0 | -17.3 | 17.9 |
| Purchase of new dwellings | \$m | 3.0 | 50.0 | 200.0 | 222.0 | -15.6 | -0.9 |
| Purchase of established dwellings | \$m | 70.0 | -23.1 | 55.6 | 4 326.0 | -16.0 | 17.9 |
| Re-financing | \$m | 14.0 | -6.7 | 27.3 | 829.0 | -16.5 | 10.5 |
| Total housing commitments | \$m | 97.0 | -22.4 | 49.2 | 5 376.0 | -16.1 | 17.0 |
| Seasonally adjusted series | | | | | | | |
| Total housing commitments | \$m | 97.0 | -12.6 | 54.0 | 5 558.0 | -1.2 | 18.5 |
| Trend series | | | | | | | |
| Dwelling units financed | no. | 796 | -0.1 | 21.2 | 42 588 | 1.6 | 5.1 |
| Total housing commitments | \$m | 105.0 | 1.9 | 40.0 | 5 531.0 | 1.9 | 20.2 |
| BUILDING APPROVALS, Apr 99 | | | | | | | |
| Original series | | | | | | | |
| Dwelling units | no. | 147 | -17.4 | 58.1 | 12 403 | -7.9 | -11.4 |
| Value of new residential | \$m | 17.8 | -25.2 | 53.4 | 1 400.4 | -7.6 | -9.8 |
| Value of residential alterations and additions | \$m | 3.6 | — | -32.1 | 222.3 | -13.7 | -20.8 |
| Value of non-residential | \$m | 20.6 | -28.2 | 216.9 | 799.0 | -24.9 | -36.0 |
| Value of total building | \$m | 42.0 | -25.3 | 76.5 | 2 421.8 | -14.6 | -21.4 |
| Trend series | | | | | | | |
| Dwelling units | no. | 185 | -11.1 | 38.1 | 12 976 | -0.3 | -4.3 |

| Indicator | Unit | ACT | | | Aust. | | |
|---|------|------------------|--------------------|------------------------------------|------------------|--------------------|------------------------------------|
| | | Latest figure | Previous period | Same period previous year | % change from | | |
| | | | | | Latest figure | Previous period | Same period previous year |
| | | | | | | | |
| BUILDING AND CONSTRUCTION <i>continued</i> | | | | | | | |
| BUILDING COMMENCEMENTS, Dec qtr 98 | | | | | | | |
| New houses | no. | 273 | -35.6 | 5.0 | 25 211 | -7.7 | -1.2 |
| Value of houses commenced | \$m | 35.0 | -30.4 | 17.1 | 3 015.8 | -5.5 | 3.4 |
| Value of non-residential building commenced | \$m | 32.6 | -39.3 | -81.3 | 3 185.1 | 2.1 | -21.4 |
| Value of total commencements | \$m | 99.9 | -21.9 | -58.9 | 8 054.4 | -4.9 | -7.8 |
| PRICE INDEXES | | | | | | | |
| Established house price index, Mar qtr 99 | | 128.6 | 0.6 | 1.2 | 131.3 | 1.8 | 5.7 |
| ENGINEERING CONSTRUCTION (Dec qtr 98) | | | | | | | |
| Private sector | | | | | | | |
| Value of work commenced | \$m | 17.7 | 86.3 | 17.2 | 2 882.1 | 23.0 | 4.8 |
| Value of work done | \$m | 15.1 | 39.8 | -20.1 | 2 966.2 | -0.9 | 8.9 |
| Value of work yet to be done | \$m | 15.3 | 10.9 | 121.7 | 5 903.6 | -1.5 | -9.5 |
| Value of work done by public sector | \$m | 21.3 | 2.9 | 17.0 | 1 683.8 | 24.7 | 18.2 |
| PRICES, WAGES AND CONSUMER SPENDING | | | | | | | |
| CONSUMER PRICE INDEX, Mar qtr 99 | | | | | | | |
| Food(a) | | 129.0 | -0.1 | 3.0 | 127.5 | 1.2 | 4.4 |
| Housing(a) | | 94.3 | 0.4 | 1.1 | 96.2 | 0.7 | 3.0 |
| Transportation(a) | | 126.5 | -0.3 | -1.9 | 121.2 | -0.6 | -1.4 |
| All groups(a) | | 121.4 | -0.2 | 0.7 | 121.8 | -0.1 | 1.2 |
| AVERAGE WEEKLY EARNINGS, Feb 99 | | | | | | | |
| Original series | | | | | | | |
| Males | \$ | 807.5 | -1.5 | -1.9 | 727.0 | 0.6 | 1.6 |
| Females | \$ | 589.9 | -3.7 | -3.5 | 480.5 | 0.9 | 2.2 |
| Persons | \$ | 700.6 | -2.8 | -2.6 | 608.4 | 0.8 | 1.8 |
| Trend series | | | | | | | |
| Males | \$ | 806.7 | -1.8 | -1.0 | 724.4 | 0.2 | 1.6 |
| Females | \$ | 595.7 | -1.7 | -0.8 | 478.8 | 0.5 | 2.4 |
| Persons | \$ | 704.1 | -1.8 | -0.8 | 606.0 | 0.2 | 1.8 |
| WAGE COST INDEX, Mar qtr 99 | | | | | | | |
| Public sector(b) | | 104.4 | 0.9 | 3.5 | 105.9 | 1.5 | 4.1 |
| Private sector(b) | | 103.7 | 0.9 | 2.4 | 104.5 | 0.7 | 2.8 |
| Total(b) | | 104.1 | 0.8 | 3.0 | 104.8 | 0.9 | 3.0 |
| RETAIL TURNOVER, Apr 99 | | | | | | | |
| Original series | | | | | | | |
| Food retailing | \$m | 77.9 | -9.3 | -2.1 | 4 771.5 | -4.0 | 5.0 |
| Department stores | \$m | 23.8 | 11.7 | -4.0 | 966.2 | 5.6 | -1.5 |
| Hospitality and services | \$m | 38.9 | 2.6 | 6.6 | 2 134.9 | -0.6 | 14.9 |
| All other retailing | \$m | 82.9 | -1.4 | 16.9 | 3 855.0 | -1.3 | 7.5 |
| Total | \$m | 223.5 | -2.5 | 5.5 | 11 727.6 | -1.7 | 6.9 |
| Trend series | | | | | | | |
| Food retailing | \$m | 83.2 | 0.2 | 2.3 | 4 909.1 | 0.4 | 6.4 |
| Department stores | \$m | 24.6 | -0.8 | 2.1 | 1 058.8 | -0.3 | 5.4 |
| Hospitality and services | \$m | 37.7 | 0.3 | 7.4 | 2 179.0 | 1.4 | 15.2 |
| All other retailing | \$m | 87.8 | 2.2 | 14.6 | 4 127.7 | 1.1 | 7.9 |
| Total | \$m | 233.3 | 0.9 | 7.5 | 12 274.6 | 0.7 | 8.3 |

(a) Base year: 1989-90=100.0.

(b) Base of each index: September quarter 1997 = 100.0.

| Indicator | Unit | ACT | | | Aust. | | |
|--|------|---------------|-----------------|---------------------------|---------------|-----------------|---------------------------|
| | | % change from | | | % change from | | |
| | | Latest figure | Previous period | Same period previous year | Latest figure | Previous period | Same period previous year |
| TOURISM AND TRANSPORT | | | | | | | |
| HOTELS, MOTELS AND GUEST HOUSE ACCOMMODATION, Dec qtr 98 | | | | | | | |
| Original series | | | | | | | |
| Room nights | '000 | 242.9 | n.a. | -1.4 | 9 904.4 | 2.7 | 4.9 |
| Takings at current prices | \$m | 24.4 | n.a. | 1.7 | 1 043.2 | n.a. | 5.7 |
| Guest arrivals | '000 | 195.0 | n.a. | n.a | 7 973.9 | n.a. | n.a. |
| Guest nights | '000 | 419.4 | n.a. | n.a | 17 560.1 | n.a. | n.a. |
| Room occupancy rate | % | 58.9 | n.a. | -5.4 | 59.4 | 1.2 | -0.7 |
| NEW MOTOR VEHICLE REGISTRATIONS, Apr 99 | | | | | | | |
| Motor vehicles | no. | 1 033 | -20.6 | -21.6 | 58 403 | -23.4 | -3.7 |
| Seasonally adjusted motor vehicles | no. | 1 161 | -0.7 | -21.7 | 64 550 | -7.0 | -1.8 |
| Trend motor vehicles | no. | 1 159 | -1.4 | -20.0 | 66 015 | -0.1 | -1.0 |
| AGGREGATE INDICATORS | | | | | | | |
| STATE ACCOUNTS, Mar qtr 99(a) | | | | | | | |
| Original series (chain volume measures)(b) | | | | | | | |
| Household final consumption expenditure | \$m | 1 496 | -9.3 | 4.5 | 82 954 | -7.5 | 5.3 |
| General government final consumption expenditure | \$m | 2 334 | -14.5 | 12.7 | 24 537 | -10.0 | 4.2 |
| Private gross fixed capital formation | \$m | 246 | -15.2 | 8.8 | 25 409 | -11.1 | -6.5 |
| Public gross fixed capital formation | \$m | 100 | -11.5 | -20.0 | 5 590 | -8.9 | 78.9 |
| State final demand | \$m | 4 175 | -12.7 | 8.4 | 140 702 | -8.6 | 4.5 |
| Gross state product | \$m | 11 943 | 4.3 | n.a. | 555 689 | 4.6 | n.a. |
| STATE ACCOUNTS, Mar qtr 99(a) | | | | | | | |
| Original series (at current prices) | | | | | | | |
| Household final consumption expenditure | \$m | 1 540 | -9.0 | 6.1 | 85 842 | -7.0 | 7.0 |
| General government final consumption expenditure | \$m | 2 395 | -15.0 | 14.3 | 25 502 | -9.8 | 6.2 |
| Private gross fixed capital formation | \$m | 241 | -16.6 | 7.6 | 26 059 | -10.8 | -5.5 |
| Public gross fixed capital formation | \$m | 105 | -12.5 | -16.7 | 5 760 | -9.2 | 83.7 |
| State final demand | \$m | 4 281 | -12.9 | 9.9 | 144 251 | -7.5 | 5.7 |
| Gross state product | \$m | 12 111 | 5.8 | n.a. | 563 517 | 6.1 | n.a. |
| PRIVATE NEW CAPITAL EXPENDITURE, Dec qtr 98 | | | | | | | |
| Original series (at current prices) | | | | | | | |
| Buildings and structures | \$m | 29 | 38.1 | 123.1 | 4 132 | 10.2 | 10.8 |
| Equipment, plant and machinery | \$m | 84 | 78.7 | 147.1 | 7 867 | -0.1 | -13.3 |
| Total | \$m | 113 | 66.2 | 140.4 | 11 998 | 3.2 | -6.3 |
| Trend series (at current prices) | | | | | | | |
| Buildings and structures | \$m | 29 | 7.4 | 123.1 | 3 887 | 2.2 | 23.6 |
| Equipment, plant and machinery | \$m | 81 | 37.3 | 107.7 | 7 605 | -4.4 | -9.1 |
| Total | \$m | 110 | 26.4 | 111.5 | 11 492 | -2.3 | -0.1 |

(a) Quarterly state final demand details are released as a special data service *Australian National Accounts: Quarterly State Details* (Cat. no. 5206.0.40.001).

(b) Reference year for chain volume measures is 1996-97.

Source: ABS publications: *Australia Demographic Statistics* (Cat. no. 3101.0), *Australian National Accounts: State Accounts* (Cat. no. 5242.0), *Housing Finance for Owner Occupation, Australia* (Cat. no. 5609.0), *Labour Force, Australia, Preliminary* (Cat. no. 6202.0), *Labour Force, Australia* (Cat. no. 6203.0), *Industral Disputes, Australia* (Cat. no. 6321.0), *Job Vacancies and Overtime, Australia* (Cat. no. 6354.0), *Consumer Price Index* (Cat. no. 6401.0), *Price Index of Materials Used in Housing Building* (Cat. no. 6408.0), *House Price Indexes: Eight Capital Cities* (Cat. no. 6416.0), *Retail Trade, Australia* (Cat. no. 8501.0), *Tourism Indicators, Australia* (Cat. no. 8634.0), *Tourism Accommodation, ACT* (Cat. no. 8635.8), *Building Approvals, Australia* (Cat. no. 8731.0), *Building Activity, Australia* (Cat. no. 8752.0), *New Motor Vehicle Registration, Australia* (Cat. no. 9301.0), *Private New Capital Expenditure, State Estimates* (Cat. no. 5646.0).

| Indicator | Unit | Latest period | NSW | Vic. | Qld | SA | WA | Tas. | NT | ACT | Aust. |
|---|---------|---------------|---------|---------|---------|---------|---------|--------|-------|--------|----------|
| POPULATION | '000 | Dec qtr 98 | 6 384.3 | 4 689.8 | 3 485.2 | 1 490.4 | 1 847.8 | 471.1 | 191.4 | 308.7 | 18 871.8 |
| LABOUR FORCE (trend) | | | | | | | | | | | |
| Employed persons | '000 | May 99 | 2 913.8 | 2 165.3 | 1 643.3 | 658.3 | 894.3 | 194.2 | 96.7 | 157.5 | 8 718.4 |
| Unemployment rate | % | May 99 | 6.7 | 7.8 | 8.0 | 8.6 | 6.9 | 10.4 | 4.2 | 6.2 | 7.4 |
| WAGE AND SALARY EARNERS (trend) | | | | | | | | | | | |
| Public sector | '000 | Dec qtr 98 | 463.0 | 306.0 | 285.1 | 113.8 | 143.8 | 41.3 | 22.3 | 67.0 | 1 442.3 |
| Private sector | '000 | Dec qtr 98 | 1 994.3 | 1 464.7 | 983.7 | 410.3 | 565.7 | 113.6 | 47.9 | 73.8 | 5 654.2 |
| Total public and private sector | '000 | Dec qtr 98 | 2 457.4 | 1 770.7 | 1 268.9 | 524.2 | 709.6 | 155.0 | 70.2 | 140.8 | 7 096.4 |
| STATE ACCOUNTS(a) (original) | | | | | | | | | | | |
| Gross state product (chain volume measures) | \$m | 1997-98 | 196 676 | 141 219 | 90 188 | 38 092 | 60 695 | 11 095 | 5 779 | 11 943 | 555 689 |
| Gross state product (current prices) | \$m | 1997-98 | 199 448 | 143 209 | 91 459 | 38 629 | 61 550 | 11 251 | 5 860 | 12 111 | 563 517 |
| PRIVATE NEW CAPITAL EXPENDITURE (trend) | | | | | | | | | | | |
| Total | \$m | Dec qtr 98 | 3 658 | 2 865 | 1 880 | 581 | 1 852 | 119 | 630 | 110 | 11 492 |
| BUILDING APPROVALS | | | | | | | | | | | |
| Dwelling units approved (original) | no. | Apr 99 | 3 978 | 3 416 | 2 305 | 568 | 1 653 | 126 | 210 | 147 | 12 403 |
| Dwelling units approved (trend) | no. | Apr 99 | 4 262 | 3 620 | 2 303 | 654 | 1 735 | 120 | 161 | 185 | 12 976 |
| Value of non-residential building approved (original) | \$m | Apr 99 | 207.2 | 183.9 | 262.2 | 22.7 | 66.4 | 26.9 | 9.2 | 20.6 | 799.0 |
| Value of all buildings approved (original) | \$m | Apr 99 | 778.8 | 639.0 | 524.3 | 90.1 | 263.7 | 43.2 | 40.6 | 42.0 | 2 421.8 |
| ENGINEERING CONSTRUCTION | | | | | | | | | | | |
| Value of engineering construction work done | \$m | Dec qtr 98 | 1 424.2 | 844.9 | 1 134.7 | 245.9 | 814.6 | 55.2 | 94.0 | 36.4 | 4 650.0 |
| AVERAGE WEEKLY EARNINGS (trend) | | | | | | | | | | | |
| Full-time adult ordinary time | \$ | Feb 99 | 783.0 | 732.1 | 698.7 | 702.9 | 743.4 | 700.7 | 751.8 | 842.1 | 745.0 |
| RETAIL TRADE (trend) | | | | | | | | | | | |
| Retail turnover | \$m | Apr 99 | 4 276.6 | 2 933.8 | 2 309.2 | 892.7 | 1 209.4 | 279.3 | 132.2 | 233.3 | 12 274.6 |
| HOTELS, MOTELS & GUEST HOUSE ACCOMMODATION | | | | | | | | | | | |
| Room nights occupied | '000 | Dec qtr 98 | 3 210.5 | 1 602.6 | 2 793.0 | 562.6 | 914.8 | 284.7 | 293.2 | 221.3 | 8 724.6 |
| Room occupancy rate | % | Dec qtr 98 | 59.8 | 58.7 | 60.6 | 60.8 | 57.7 | 56.2 | 52.8 | 59.1 | 54.6 |
| NEW MOTOR VEHICLE REGISTRATIONS (trend) | no. | Apr 99 | 22 054 | 18 070 | 11 812 | 4 208 | 6 559 | 1 357 | 795 | 1 159 | 66 015 |
| | Unit | Latest period | Syd. | Melb. | Bris. | Adel. | Perth | Hob. | Dar. | Canb. | Aust. |
| CONSUMER PRICE INDEX | | | | | | | | | | | |
| Food(d) | | Mar qtr 99 | 129.1 | 125.8 | 126.4 | 128.0 | 128.4 | 125.5 | 125.6 | 129.0 | 127.5 |
| Housing(d) | | Mar qtr 99 | 103.8 | 87.3 | 101.6 | 92.2 | 90.6 | 95.8 | 116.0 | 94.3 | 96.2 |
| Transportation(d) | | Mar qtr 99 | 122.5 | 119.9 | 120.5 | 120.9 | 121.1 | 118.4 | 119.1 | 126.5 | 121.2 |
| All Groups(d) | | Mar qtr 99 | 122.6 | 121.0 | 122.8 | 122.7 | 119.8 | 122.1 | 122.1 | 121.4 | 121.8 |
| Average retail prices (cents) | | | | | | | | | | | |
| Milk, carton, supermarket sales | 1 litre | Mar qtr 99 | 122 | 139 | 119 | 136 | 141 | 130 | 130 | 115 | n.a. |
| Bread, white loaf, sliced, supermarket sales | 680 g | Mar qtr 99 | 217 | 212 | 192 | 161 | 208 | 203 | 217 | 210 | n.a. |
| Beef, rump steak | 1 kg | Mar qtr 99 | 1 180 | 1 059 | 1 066 | 1 193 | 1 091 | 1 001 | 1 190 | 1 142 | n.a. |
| Chicken, frozen | 1 kg | Mar qtr 99 | 369 | 357 | 322 | 365 | 350 | 378 | 381 | 361 | n.a. |
| Potatoes | 1 kg | Mar qtr 99 | 129 | 149 | 124 | 82 | 138 | 89 | 149 | 146 | n.a. |
| Coffee, instant (jar) | 150 g | Mar qtr 99 | 627 | 634 | 584 | 556 | 643 | 588 | 589 | 535 | n.a. |
| Scotch nip, public bar | 30 ml | Mar qtr 99 | 329 | 318 | 269 | 358 | 389 | 264 | 330 | 273 | n.a. |
| Private motoring petrol | | | | | | | | | | | |
| Leaded | 1 litre | Mar qtr 99 | 68.7 | 66.8 | 60.2 | 68.3 | 68.9 | 74.1 | 75.7 | 72.0 | n.a. |
| Unleaded | 1 litre | Mar qtr 99 | 66.4 | 64.6 | 57.9 | 65.9 | 66.7 | 72.1 | 73.7 | 69.7 | n.a. |

(a) State estimates are not comparable to national estimates from the June quarter 1995 due to revised methodology used in Australian National Accounts, State Accounts (Cat. no. 5242.0).

(b) Experimental series. Users are cautioned these estimates are derived indirectly by calculating a deflator from the expenditure components of the state series concerned. Therefore, in general, the sum of the state estimates does not equal the estimates for Australia.

(c) Reference year for chain volume measures is 1996-97.

(d) Base year: 1989-90 = 100.0.

| Indicator | Latest period | NSW | Vic. | Qld | SA | WA | Tas. | NT | ACT | Aust. |
|---|---------------|-------|-------|-------|-------|-------|-------|-------|-------|-------|
| POPULATION | Dec qtr 98 | 0.3 | 0.3 | 0.4 | 0.1 | 0.4 | -0.1 | 0.3 | — | 0.3 |
| LABOUR FORCE (trend) | | | | | | | | | | |
| Employed persons | May 99 | 0.2 | -0.1 | 0.2 | — | — | 0.2 | 0.4 | 0.1 | 0.1 |
| Unemployment rate | May 99 | -0.1 | 0.1 | 0.1 | -0.1 | -0.1 | — | — | 0.1 | — |
| WAGE AND SALARY EARNERS (trend) | | | | | | | | | | |
| Pubic sector | Dec qtr 98 | -1.3 | -1.0 | 1.3 | -4.4 | -2.3 | 1.2 | — | -1.2 | -1.0 |
| Private sector | Dec qtr 98 | 2.5 | 1.4 | 0.2 | 2.1 | 0.1 | 1.0 | 1.1 | 2.5 | 1.5 |
| Total public and private sector | Dec qtr 98 | 1.8 | 1.0 | 0.5 | 0.7 | -0.4 | 1.1 | 0.7 | 0.7 | 1.0 |
| STATE ACCOUNTS(a) (original) | | | | | | | | | | |
| Gross state product (chain volume measures)(b)(c) | Mar qtr 99 | 4.6 | 3.8 | 4.9 | 4.6 | 6.5 | 4.0 | 5.1 | 4.3 | 4.6 |
| Gross state product (current prices) | Mar qtr 99 | 6.0 | 5.3 | 6.4 | 6.1 | 8.0 | 5.5 | 6.5 | 5.8 | 6.1 |
| PRIVATE NEW CAPITAL EXPENDITURE (trend) | | | | | | | | | | |
| Total (at current prices) | Dec qtr 98 | -0.7 | 0.6 | 5.4 | -13.7 | -12.9 | -7.0 | 56.3 | 26.4 | -2.3 |
| BUILDING APPROVALS | | | | | | | | | | |
| Dwelling units approved (original) | Apr 99 | -9.8 | -6.1 | 0.5 | -24.3 | -14.0 | — | 38.2 | -17.4 | -7.9 |
| Dwelling units approved (trend) | Apr 99 | -0.8 | 1.6 | -0.9 | 0.9 | 0.5 | 1.7 | -1.2 | -11.1 | -0.3 |
| Value of non-residential building approved (original) | Apr 99 | -47.5 | -33.1 | 37.3 | -59.5 | -23.3 | 63.0 | -40.3 | -28.2 | -24.9 |
| Value of all buildings approved (original) | Apr 99 | -22.8 | -19.8 | 14.1 | -35.6 | -14.4 | 36.7 | 8.8 | -25.3 | -14.6 |
| ENGINEERING CONSTRUCTION | | | | | | | | | | |
| Value of engineering construction work done | Dec qtr 98 | 14.6 | 3.1 | 15.2 | 0.6 | -7.3 | 3.4 | 7.6 | 15.2 | 7.1 |
| AVERAGE WEEKLY EARNINGS (trend) | | | | | | | | | | |
| Full-time adult ordinary time | Feb 99 | 1.5 | — | 0.2 | 0.5 | -0.4 | 0.4 | 0.3 | -0.8 | 0.6 |
| RETAIL TRADE (trend) | | | | | | | | | | |
| Retail turnover | Apr 99 | 0.9 | 0.8 | 0.7 | -0.1 | 0.1 | 0.7 | 0.5 | 0.9 | 0.7 |
| HOTELS, MOTELS & GUEST HOUSE ACCOMMODATION | | | | | | | | | | |
| Room nights occupied | Dec qtr 98 | 11.1 | 13.2 | 17.7 | 17.3 | 11.0 | 26.0 | -0.6 | -8.9 | -3.7 |
| Room occupancy rate | Dec qtr 98 | 3.5 | 4.8 | 6.5 | 7.2 | 3.2 | 11.5 | -1.4 | -5.7 | -3.4 |
| NEW MOTOR VEHICLE REGISTRATIONS (trend) | Apr 99 | -0.5 | 1.6 | -2.5 | 0.3 | 0.4 | 2.8 | 3.1 | -1.4 | -0.1 |
| | Latest period | Syd. | Melb. | Bris. | Adel. | Perth | Hob. | Dar. | Canb. | Aust. |
| CONSUMER PRICE INDEX | | | | | | | | | | |
| Food(d) | Mar qtr 99 | 1.8 | 1.2 | 1.1 | -0.2 | 0.6 | 0.4 | 120.6 | -0.1 | 1.2 |
| Housing(d) | Mar qtr 99 | 1.2 | 0.8 | 0.3 | 0.3 | 0.2 | 0.4 | 1.3 | 0.4 | 0.7 |
| Transportation(d) | Mar qtr 99 | -0.7 | -0.6 | -0.4 | -0.3 | -0.9 | -0.2 | -0.6 | -0.3 | -0.6 |
| All Groups(d) | Mar qtr 99 | 0.2 | 0.2 | -0.2 | -0.7 | -0.3 | -0.5 | -0.5 | -0.2 | -0.1 |
| Average retail prices (cents) | | | | | | | | | | |
| Milk, carton, supermarket sales | Mar qtr 99 | 5.2 | 3.0 | -0.8 | 3.0 | 4.4 | 4.0 | 6.6 | 0.0 | n.a. |
| Bread, white loaf, sliced, supermarket sales | Mar qtr 99 | 3.3 | 5.5 | -3.5 | -3.6 | 6.1 | -0.5 | — | 0.0 | n.a. |
| Beef, rump steak | Mar qtr 99 | 1.5 | 2.7 | 2.4 | 3.2 | 7.2 | 13.6 | -3.2 | -2.1 | n.a. |
| Chicken, frozen | Mar qtr 99 | 0.8 | 3.5 | -4.7 | 9.9 | 0.3 | -0.5 | 8.5 | 4.3 | n.a. |
| Potatoes | Mar qtr 99 | 1.6 | 8.8 | -7.5 | -4.7 | 2.2 | 15.6 | 21.1 | -2.0 | n.a. |
| Coffee, instant (jar) | Mar qtr 99 | 9.4 | 3.9 | -2.7 | -1.2 | -5.3 | -12.4 | -2.6 | -13.0 | n.a. |
| Scotch nip, public bar | Mar qtr 99 | -6.8 | 0.6 | -0.4 | -1.1 | 1.3 | — | 0.9 | 1.1 | n.a. |
| Private motoring petrol | | | | | | | | | | |
| Leaded | Mar qtr 99 | -3.4 | -2.2 | -2.6 | -1.7 | -2.7 | -0.9 | -1.9 | -2.7 | n.a. |
| Unleaded | Mar qtr 99 | -3.5 | -2.3 | -2.7 | -1.9 | -2.8 | -1.0 | -2.0 | -2.8 | n.a. |

(a) State estimates are not comparable to national estimates from the June quarter 1995 due to revised methodology used in Australian National Accounts, State Accounts (Cat. no. 5242.0).

(b) Experimental series. Users are cautioned these estimates are derived indirectly by calculating a deflator from the expenditure components of the state series concerned. Therefore, in general, the sum of the state estimates does not equal the estimates for Australia.

(c) Reference year for chain volume measures is 1996-97.

(d) Base year: 1989-90 = 100.0.

SELF-HELP ACCESS TO STATISTICS

| | |
|-------------------------|--|
| <i>CPI INFOLINE</i> | For current and historical Consumer Price Index data, call 1902 981 074 (call cost 75c per minute). |
| <i>DIAL-A-STATISTIC</i> | For the latest figures for National Accounts, Balance of Payments, Labour Force, Average Weekly Earnings, Estimated Resident Population and the Consumer Price Index call 1900 986 400 (call cost 75c per minute). |
| <i>INTERNET</i> | www.abs.gov.au |
| <i>LIBRARY</i> | A range of ABS publications is available from public and tertiary libraries Australia-wide. Contact your nearest library to determine whether it has the ABS statistics you require. |

WHY NOT SUBSCRIBE?

| | |
|--------------|------------------|
| <i>PHONE</i> | +61 1300 366 323 |
| <i>FAX</i> | +61 03 9615 7848 |

CONSULTANCY SERVICES

ABS offers consultancy services on a user pays basis to help you access published and unpublished data. Data that is already published and can be provided within 5 minutes is free of charge. Statistical methodological services are also available. Please contact:

| <i>INQUIRIES</i> | <i>City</i> | <i>By phone</i> | <i>By fax</i> |
|------------------|-------------|-----------------|---------------|
| | Canberra | 02 6252 6627 | 02 6207 0282 |
| | Sydney | 02 9268 4611 | 02 9268 4668 |
| | Melbourne | 03 9615 7755 | 03 9615 7798 |
| | Brisbane | 07 3222 6351 | 07 3222 6283 |
| | Perth | 08 9360 5140 | 08 9360 5955 |
| | Adelaide | 08 8237 7400 | 08 8237 7566 |
| | Hobart | 03 6222 5800 | 03 6222 5995 |
| | Darwin | 08 8943 2111 | 08 8981 1218 |

POST Client Services, ABS, PO Box 10, Belconnen ACT 2616

EMAIL client.services@abs.gov.au



2130380006991
ISSN 1320-808X

RRP \$15.50